



Installation Notes

Soundbooster Remote Control

v1.2 (09.05.2019)

Contents

1	Liability Exclusion	3
2	Copyright	4
3	General notes	4
4	Safety Instructions	5
5	Requirements for the intended use	5
6	How to connect a cable to another	6
7	Note Cable Inscription/Color	7
8	Hinweis	8
9	Certificate of Conformity	8
10	Connection Receiver / handling	9
11	Remote Control Programming	10
12	Note	11

1 Liability Exclusion

Dear Customer,

Our cable sets are developed according to the connection- and circuit diagrams of the corresponding car manufacturers. Before the serial production, the cable sets will be adjusted and tested on an original vehicle. Therefore, the integration into the vehicle electronics follows the guidelines provided by the car manufacturer. Our installation instructions correspond to what is common in the vehicle electric/electronic regarding the required pre-understanding and the accuracy of the description in text and picture. They have proven its worth in practice hundreds of times.

If you should experience any difficulties while installing one of our products, we are available to provide support via phone or email. Additionally, we offer you to execute the installation in our workshop in Bad Segeberg.

Costs, arising from third parties assigned with the installation of our products, are not being covered by us. We will only compensate the proven costs of the assembly and the costs of the disassembly of the defective product, if it turns out that there is an issue with our product. We limit the reimbursement of costs up to 110 Euro gross and reserve the right to verify the claim in our workshop in Bad Segeberg. The costs for shipping will be refunded if the claim is justified.

We made the experience, that every professional workshop that is equipped with the necessary diagnostic devices, the diagnostic software and the manufacturer's circuit diagrams, is able to find any possible defects in one of our products in a short period of time. The assembly and disassembly including troubleshooting the issue should therefore only take up to 60 minutes.

We also made the experience, that many professional workshops are not able to cope with the manufacturer's circuit diagrams and can't read common wiring schemes, which results in the calculation of several hours for the simplest installations. You will understand the fact, that we can neither take the risk of finding a reliable workshop for you, nor can we finance the training of the employees of your trusted workshop.

Costs, arising from purchasing missing parts or replacements for defective parts from other suppliers, are covered by us up to the amount that the subsequent delivery would have caused (saved expenses). According to the legal warranty law, there would be no reimbursement right, if there was no deadline for the subsequent fulfilling set or the deadline for a subsequent fulfilling hasn't expired.

That being said, if you have any problems during the installation or operation of one of our products call us, write us an email, send us the product or come by our workshop in Bad Segeberg with your vehicle. We are certain, that we can find a solution for any kind of concern.

Kind regards,

Your Kufatec GmbH & Co. KG Team

2 Copyright

Our installation and operation instructions, installation plans, software and other written and/or pictured documentations are protected by copyright.

The publication or distribution of these documentations is only permitted with a written approval of Kufatec GmbH & Co. KG.

3 General notes

While developing this product, your personal safety combined with the best operating service, modern design and an up-to-date production technique was especially taken into account.

Unfortunately, despite the utmost care injuries and/or damages might occur due to improper installation and/or use.

Therefore, please read the following instruction manual fully and thoroughly and keep it!

All articles of our production line pass through a 100% check – for your safety and security.

We reserve the right to carry out technical changes which serve the improvement at any time.

Depending on each product and purpose, it might be necessary to check each country's legal regulations before installing and starting it.

In case of warranty claims, the product has to be sent back to the seller in the original packaging with the attached bill of purchase and detailed defect's description. Please, pay attention to the manufacturers return requirements (RMA). The legal warranty directions are valid.

The warranty claim as well as the operating permission becomes invalid due to:

- unauthorized changes to the device or accessories which have not been approved or carried out by the manufacturer or its partners
- opening the casing of the device
- repairing the device on one's own
- improper use/operation
- brute force to the device (drop, willful damage, accident etc.)

During the installation, please pay attention to all safety relevant and legal directions. The device should only be installed by trained personnel or similarly qualified people.

In case of installation problems or problems concerning the functionality of the device, limit the time to approx. 0,5 hours for mechanical or 1,0 hours for electrical troubleshooting.

To avoid unnecessary costs and time-loss, send in an immediate support-request, via the Kufatec-contact-form (<http://www.kufatec.de/shop/de/infocenter/>).

In case of, let us know the following:

- Car chassis number/vehicle identification number
- Five-digit part number of the device
- Exact description of the problem
- Steps you have taken to solve the problem

4 Safety Instructions

The installation should only be performed by trained personnel. Only perform installations while in a voltage-free state. For example, disconnect the battery. Please pay attention to the instructions provided by the manufacturer.

- Never use bolts or nuts from the car's safety devices for installation. If bolts or nuts from the steering wheel, brakes or other safety devices are used for installation of the device, it may cause an accident.
- Use the device with a DC 12V negative ground car. This device cannot be used in large trucks which use a DC 24V battery. If it is used with a DC 24V battery, it may cause a fire or accident.
- Avoid installing the device in places that would restrict you from driving safe or where it could damage the car's other fittings.
- This device should only be used in combination with the mentioned vehicles. Only connections described within this instructions guide are allowed or required to use for installation.
- For damages caused by faulty installation, unsuitable connections or inappropriate vehicles, Kufatec GmbH & Co. KG assumes no liability.
- We advise you that these devices process data from the MOST – protocol of the vehicle. As the supplier of this device we don't know the overall system you are working with. If your device causes damage, due to other changes made to the vehicle, Kufatec GmbH & Co. KG assumes no liability.
- Kufatec GmbH & Co. KG supplier does not guarantee the use of the product for changes within a new vehicle series.
- If the car manufacturers don't agree with the installation of our device by reason of warranty, Kufatec GmbH & Co. KG assumes no liability. Please, check conditions and warranty before you begin the installation.
- Kufatec GmbH & Co. KG reserves the right to change the device specifications without notice.
- Subject to errors and changes.

5 Requirements for the intended use

Only use this device in its intended area.

In case of unprofessional installation, improper use or modification, the permission for the operation and the warranty claim will expire.

6 How to connect a cable to another

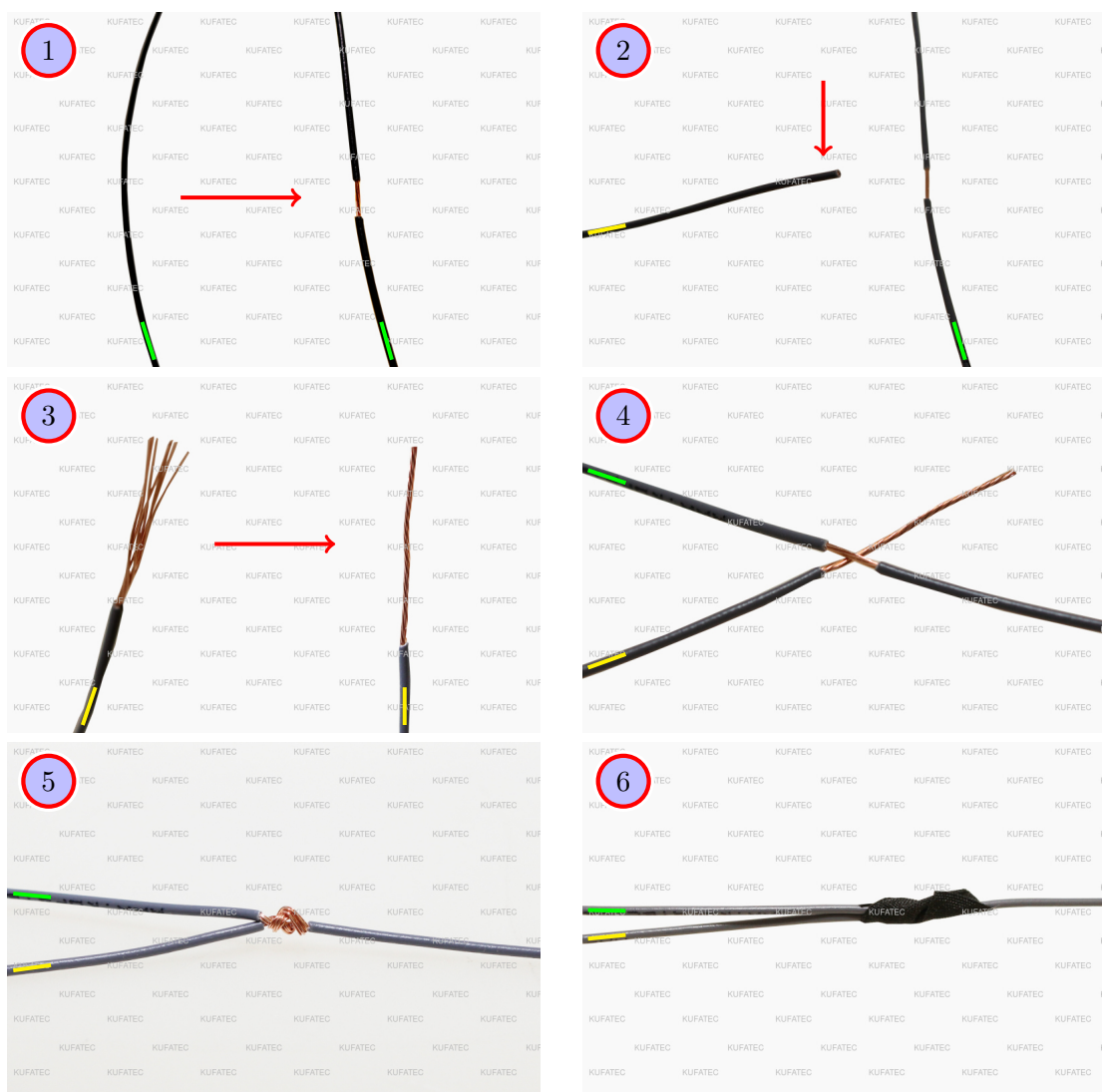


Figure 1: How to connect a cable to another

Table 1: How to connect a cable to another

No.	Work step	Note
1	Take the cable of the vehicle, to which you want to connect, (green marked here) and strip the insulation at one point with a suitable tool (cable stripper/cutter knife).	
2	Now take the cable of the cable set, which you want to connect, (yellow marked here) and strip the insulation at the end.	
3	Twirl the wires of the stripped cable together.	
4	Place the end of the cable you want to connect under the stripped point of the cable of the vehicle...	
5	... and wrap the cable you want to connect around the cable of the vehicle. Solder the connection professionally.	
6	Lastly, stick insulating tape around the connection point. Make sure that the isolation is put onto the connection professionally to prevent corrosion.	

7 Note Cable Inscription/Color

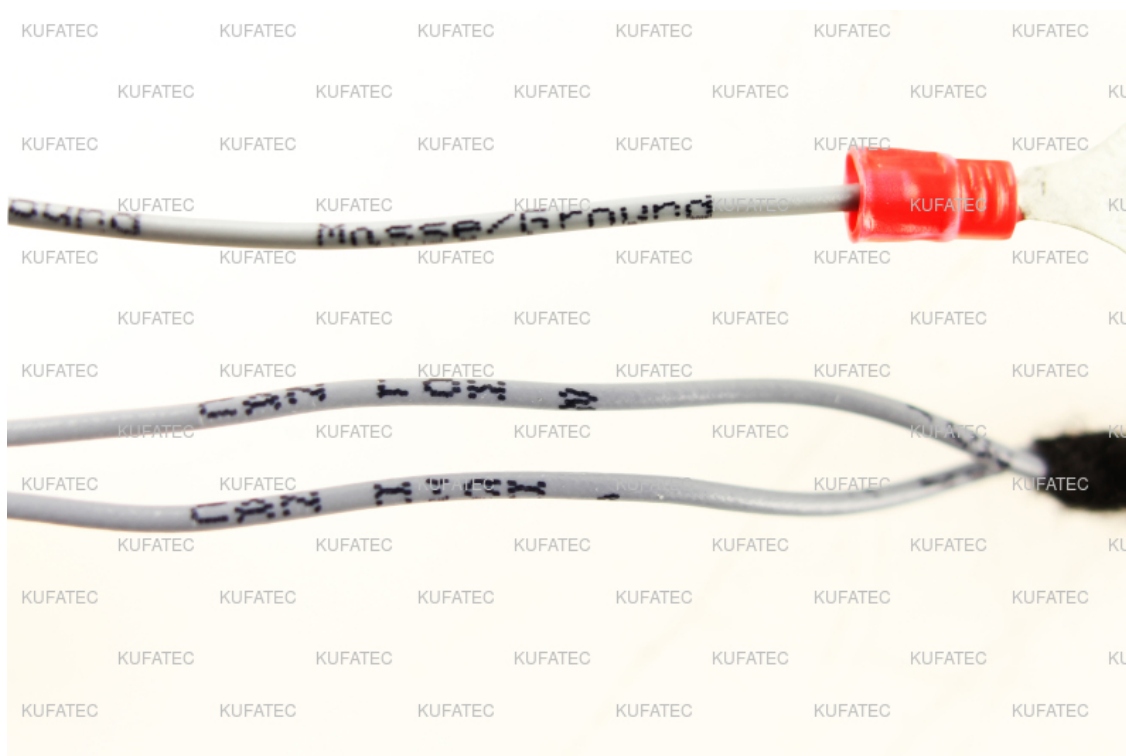


Figure 2: Cable Inscription

If the cable set consists of colored cables, connect the cables according to the color. If all cables of the cable set have the same color, connect the cables according to the cable inscription.

8 Hinweis

Important Note for the Hardware

- From Hardware 29/15 it could be that there is a Firmwareupdate required. The actual Firmwareupdate can be downloaded under the following URL: <http://www.sound-booster.com/en/member.html>
- Is the Hardware lower then 29/15 only the function for switching the sound profiles are available. For this we offer a suitable Hardwareupdate under Item Number 41114.

9 Certificate of Conformity

Important note for Certificate of Conformity

- Hereby, Kufatec GmbH & Co. KG declares that the KUFATEC Sound Booster Remote Control are in compliance with the essential requirements and other relevant provisions of Directive 1999/5/EG. The declaration of conformity can be found at the following address: www.kufatec.de/ce

10 Connection Receiver / handling

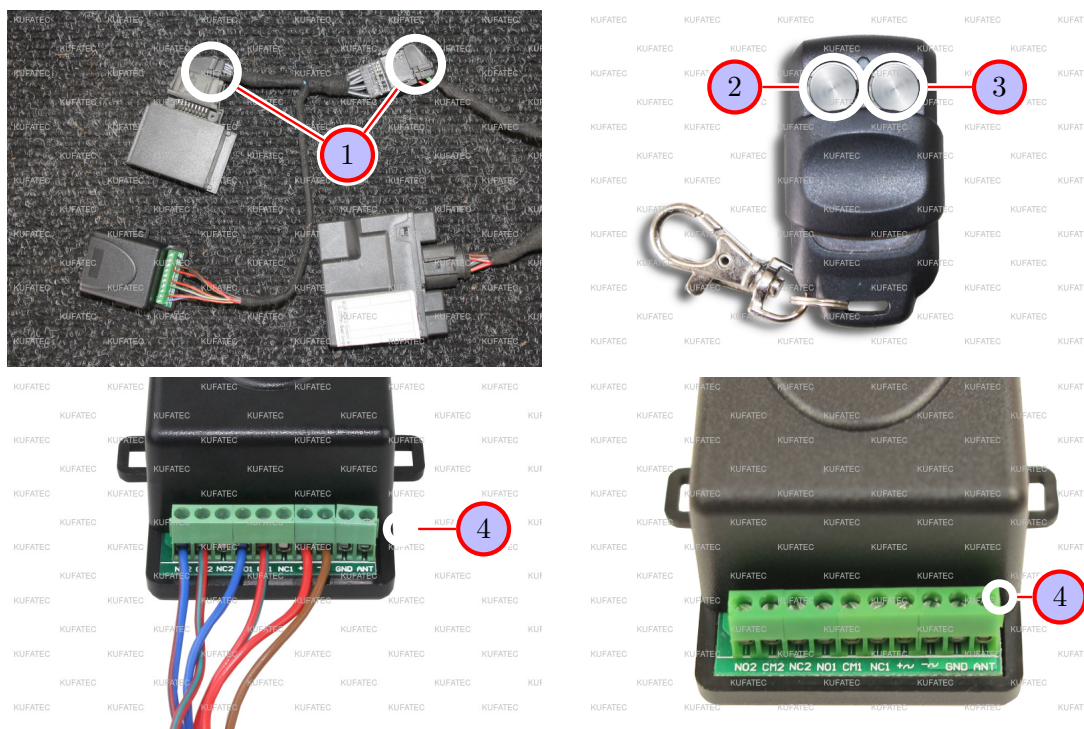


Figure 3: Connection Receiver / handling

Table 2: Instruction for the Connection of the Receiver / the handling

No.	Procedure	Note
1	The Receiver can be installed by plug & play between the Kufatec Module and harness. Remove the connector from the Kufatec Module and plug it into the adapter from the receiver. Then plug the connector from the receiver into the Kufatec Module.	
2	By pushing approx. 1 second the button on the left side, you can turn on or off the sound booster. If you turn off the sound booster the last active profile will be saved.	
3	If you push the button on the right side for approx. 1 second, the sound profile will switch to the next profile.	
4	In case that some of the wires slip out of the Receiver, please find below the exact PIN definition:	
	Red wire to + (plus)	
	Brown wire to - (minus)	
	Blue/yellow wire to N01	
	Blue/red wire to N02	
	Red/green wire to CM1 & CM2	

11 Remote Control Programming

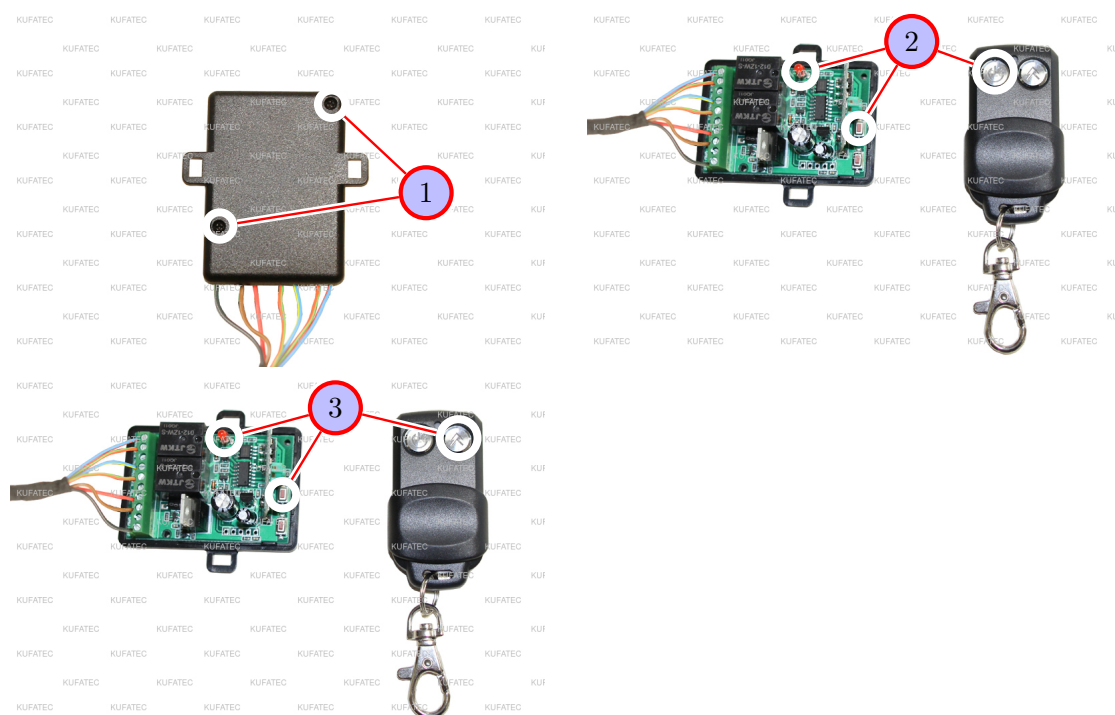


Figure 4: Remote Control Programming

Table 3: Instruction for the Programming of the Remote Control

No	Procedure	Note
1	The delivered remote control is paired together with the receiver, so that you can use it immediately. If the remote control have lost the connection to the receiver, it can be reconnected as follows. At first loosen the 2 marked screws at the housing and remove the cover. The receiver must be completely installed in the vehicle to get power.	
2	Now press 1 time the highlighted button on the board. Afterwards the LED begins to light. Then hold the marked button at the remote control until the relais clicks 1 time. Following the button is programmed and the LED turns off again.	
3	Now press 2 times in short distance the marked button at the board and as soon as the LED begins to light press the highlighted button on the remote control. Upon successful programming, the marked LED turns off and the relay clicks 1 time.	

12 Note

Troubleshooting

- If the remote control does not work, please proceed as follows:
- If it is not possible to change the mode (e.g. mode 5 to mode 6) via the remote control, **Driveselect might be active**. The module changes shortly to mode 6 and right back to mode 5 in that case. This can be fixed by deactivating Driveselect either through the **Soundbooster-App** or through the **PC Software**.
- If Driveselect is not active, check if the remote control controls the module. While using the remote control, you should be able to hear a **click noise** in the **module**.
- If you can't hear the **click noise** in the module, the remote control has to be trained to the module again. How to train the remote control can be found in the manual in section Remote Control Programming.

List of Figures

1	How to connect a cable to another	6
2	Cable Inscription	7
3	Connection Receiver / handling	9
4	Remote Control Programming	10

List of Tables

1	How to connect a cable to another	6
2	Instruction for the Connection of the Receiver / the handling	9
3	Instruction for the Programming of the Remote Control	10